

HERO

Healthcare Asset Solutions



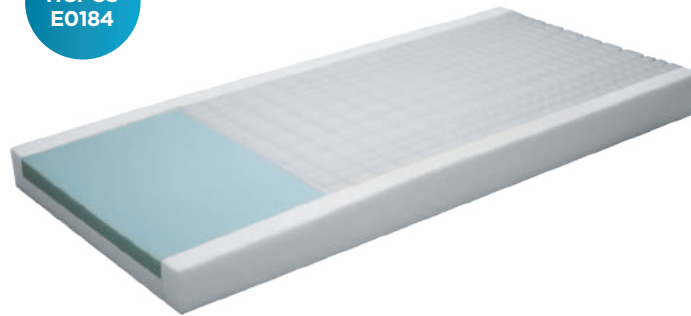
2023

PRESSURE
REDISTRIBUTION
PRODUCTS

16812 Red Hill Avenue, Suite A • Irvine, CA 92606
(800) 834-1122 • info@herobiz.com

HERO 300

Pressure Redistribution Foam Mattress



FEATURES AND BENEFITS:

Multi-tiered pressure redistribution mattress with top layer of high density and high resilient die-cut in the torso and head section offers unparalleled pressure redistribution.

The sloped heel section combined with ultra soft foam reduces pressure and increases blood circulation by redistributing the load from heel to the less vulnerable lower leg.

PTSS Rail System provides additional support for easy patient transfer and edge of bed sitting.

Stretch nylon top cover reduces perspiration and provides a low shear friction surface that is anti-microbial and fluid resistant.

360 degree zipper for easy removal, cleaning or replacement.

Anti-Contamination Flap covers the zipper reducing the possibility of fluid migration.

Bottom Cover: Triple laminate vinyl; fluid resistant; anti-microbial/anti-bacterial; fire retardant.

Fire sleeve meets Federal Fire Code 16 CFR part 1633.

Weight Capacity: 350 lbs.

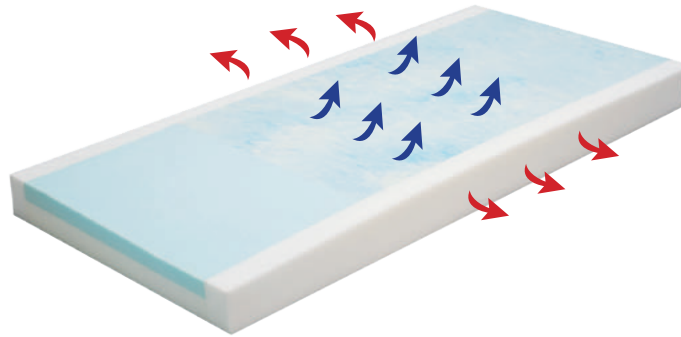
Warranty: Core; 7 Year Non-Prorated. Cover; 2 Year.

Optional raised rails available on all sizes.

81031	HERO 300	36"x76"x6"
81032	HERO 300	36"x80"x6"
81033	HERO 300	36"x84"x6"
81034	HERO 300 Plus	36"x76"x9"
81035	HERO 300 Plus	36"x80"x9"
81036	HERO 300 Plus	36"x84"x9"

HERO 500

Gel Infused Foam Pressure Redistribution Mattress



FEATURES AND BENEFITS:

The HERO 500 with (VGPT)[™] Visco Gel Polymer Technology is a revolutionary support surface that provides unprecedented pressure redistribution, rapid heat dissipation, and vast increases in breathability compared to traditional foam.

Reduces occurrence of pressure sores by channeling heat away from the body significantly faster than traditional foam, virtually eliminating perspiration. Superior pressure redistribution is delivered by providing more support and less cradling at higher levels of compression, redistributing pressure over a large surface area eliminating static fatigue. Protects vulnerable heel area with a 30 degree slope redistributing pressure to the entire leg and away from the heel.

PTSS Rail System provides additional support for easy patient transfer and edge of bed sitting. Stretch nylon top cover reduces perspiration and provides a low shear friction surface that is anti-microbial and fluid resistant.

Available in 54" & 60" widths.

Fire sleeve meets Federal Fire Code 16 CFR part 1633.

Weight Capacity: 450 lbs.

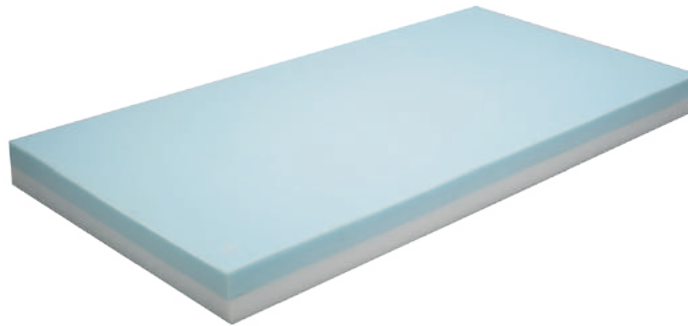
Warranty: Core; 15 Year Non-Prorated. Cover; 2 Year.

Optional raised rails available on all sizes.

81051	HERO 500	36"x76"x6"
81052	HERO 500	36"x80"x6"
81053	HERO 500	36"x84"x6"
81054	HERO 500 Plus	36"x76"x9"
81055	HERO 500 Plus	36"x80"x9"
81056	HERO 500 Plus	36"x84"x9"
81052-42	HERO 500	42"x80"x6"
81052-48	HERO 500	48"x80"x6"

HERO 600

Bariatric Pressure Redistribution Foam Mattress



FEATURES AND BENEFITS:

Top-layer of high resilient high density foam provides optimal support and comfort for your Bariatric patients.

Foam bottom layer is made of ultra high density high resilient foam which provides unprecedented patient support and stability.

Stretch nylon top cover reduces perspiration and provides a low shear friction surface that is anti-microbial and fluid resistant.

360 degree zipper for easy removal, cleaning or replacement.

Anti-Contamination Flap covers the zipper reducing the possibility of fluids damaging the foam core.

Bottom Cover: Triple laminate vinyl; fluid resistant; anti-microbial/anti-bacterial; fire retardant.

Fire sleeve meets Federal Fire Code 16 CFR part 1633.

Weight Capacity: Up to 1000 lbs.

Warranty: Core; 1 Year Non-Prorated. Cover; 1 Year.

Optional raised rails available on all sizes

81061	HERO 600-42	42"x76"x6"
81062	HERO 600-42	42"x80"x6"
81063	HERO 600-42	42"x84"x6"
81064	HERO 600-48	48"x76"x6"
81065	HERO 600-48	48"x80"x6"
81066	HERO 600-48	48"x84"x6"
81067	HERO 600-54	54"x76"x6"
81068	HERO 600-54	54"x80"x6"
81075	HERO 600-60	60"x80"x6"

HERO Aire 3000

Low Air Loss/Alternating
Pressure Mattress System



HCPCS
E0277

FEATURES AND BENEFITS:

HERO AIRE 3000 PUMP

Low air loss and alternating pressure therapies in one system.
Air flow dial offers custom patient comfort and pressure levels.
Static function for safe and easy patient transfer.
Preset 10 minute alternating cycle.
Visual low pressure alarm indicates air flow may be compromised.

MATTRESS & COVER

18 laser holes keeps the patient cool and dry.
Removable, fluid resistant, non-shear, antimicrobial nylon cover.
Pillow top feature prevents head and neck from unnecessary movement during alternating mode.
Optional raised side rails.
Weight Capacity: 350 lbs.
Warranty: 18 Month Non-Prorated.

80030	HERO Aire 3000 36"x80"x8"
80030RR	HERO Aire 3000 with Raised Rails

HERO Aire 4000

Low Air Loss/Alternating
Pressure Mattress System with
Digital Pump



HCPCS
E0277

FEATURES AND BENEFITS:

HERO AIRE 4000DX PUMP

Extended Warranty Digital Pump with Auto Compressor Sleep Technology (ACST) shuts off compressor at desired pressure level extending pump life cycle.
Low air loss and alternating pressure therapies in one system.
Adjustable weight settings allows pressure to be customized according to each patient's therapeutic requirements.
Preset 10 minute alternating cycle.
Static function for safe and easy patient transfer.
Audio/visual low pressure alarm indicates airflow may be compromised.

MATTRESS & COVER

18 laser holes keeps the patient cool and dry.
Nylon top cover is fluid resistant and quilted for added comfort.
Static head section prevents unnecessary head/neck movement.
Optional raised side rails.
Weight Capacity: 400 lbs. Warranty: 2 Year Non-Prorated.

80040DX	HERO Aire 4000DX 36"x80"x8"
80040DXRR	HERO Aire 4000DX with Raised Rails

HERO Aire 6000

Low Air Loss/Alternating
Pressure Mattress System w/
Deluxe Digital Pump,
Cell-On-Cell Support Base



HCPCS
E0277

FEATURES AND BENEFITS:

HERO AIRE 6000 PUMP

Dual therapies; low air loss and alternating pressure.
4 alternating cycles 10, 15, 20 & 25 minutes allows clinicians to customize therapy.
Seat-inflate feature helps protect the patient when they are in the fowler position.
Auto firm mode for quick inflation.
Static mode provides firm support for egress or ingress from mattress or side edge seating.
3 audible and visual alarms; low pressure, power failure and alternating failure.

MATTRESS & COVER

Unique cell-on-cell design ensures that the mattress will hold air in the lower cells in the event of a power failure.
18 laser holes keeps the patient cool and dry.
Nylon top cover is fluid resistant and quilted for added comfort.
Pillow top feature prevents head and neck from unnecessary movement during alternating mode.
Available in 84" length.
Optional raised side rails.
Weight Capacity: 450 lbs.
Warranty: 2 Year Non-Prorated.

80060	HERO Aire 6000 36"x80"x8"
80065	HERO Aire 6000 with Raised Rails

HERO Aire 9900

True Low Air Loss Mattress System with Alternating Pressure and Pulsation



FEATURES AND BENEFITS:

1275 liters per minute of true low air loss. Provides effective true air loss with alternating pressure and pulsation.

State of the art micro-controller technology monitors blower speed to set pressures.

User-friendly control panel with dome keys, LED display for simple user interface. Displays patient comfort pressure level by weight. Alternating pressure cycles of 5, 10, 15, 20, 25 & 30 minutes allows clinicians to customize pressure redistribution and skin surface interface.

Cell-on-cell mattress design prevents patient from bottoming out in case of power failure. Automatic fowler (seat inflate) recognizes when the patient is in the upright position and increases air flow in the middle bladders by 20% to prevent bottoming out.

Audio/visual alarms in the event of power outage or low pressures. Internal memory always retains current settings during power outage, will resume desired operation upon power return.

Nylon top cover is fluid resistant and quilted for added comfort.

Optional air bolster helps mitigate accidental roll outs. Optional raised side rails available on all sizes.

Weight Capacity: 1,000 lbs.

Warranty: 2 Year Non-Prorated.

81090-36	HERO Aire 9900 36"x80"x8"
81090-36RR	HERO Aire 9900 with Raised Rails
81090-36AB	HERO Aire 9900 with Air Bolsters
81090-42	HERO Aire 9900 42"x80"x8"
81090-42AB	HERO Aire 9900 with Air Bolsters 42"
81090-48	HERO Aire 9900 48"x80"x8"
81090-48AB	HERO Aire 9900 with Air Bolsters 48"
81090-54	HERO Aire 9900 54"x80"x8"
81090-60	HERO Aire 9900 60"x80"x8"

HERO Ultra Comfort Stretcher Pads

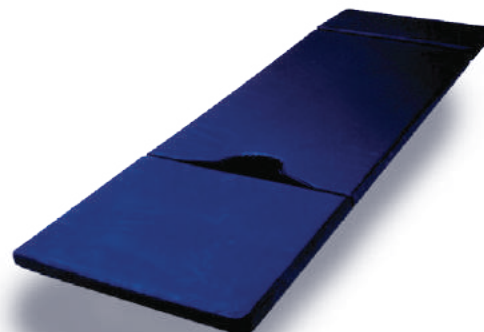
One Section



Two Section

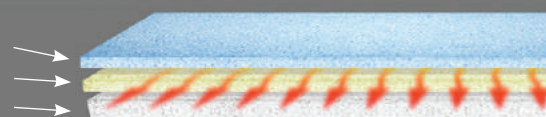


Three Section



Visco Gel Polymer Technology (VGPT™) works by allowing air to pass through open cells, channeling heat away from the body instead of trapping it within the closed cells of standard memory foam.

Visco Gel Polymer Technology (VGPT™)
High density layer
Firm foam base



Visco Gel Polymer Technology (VGPT™) is utilized in the top layer of the stretcher pad. The breathable open cell visco memory foam is comfortable, supportive and keeps the patient cool.

The gel polymer infused visco memory foam top layer conforms to the body and reduces static fatigue (bottoming out) providing a comfortable pressure reduced environment for your patient.

Combining three layers of high density, high resilient, medical grade urethane foam helps provide outstanding pressure redistribution, postural support and comfort.

Middle layer foam further helps to redistribute pressure while the firm base adds support.

Durable yet breathable stretch cover reduces shear and friction. The non-skid bottom utilizes Velcro strips to ensure the pad stays in place.

Pads can be custom designed to meet most manufactures original specifications.

Fluid Protection Zipper Guard (FPZG™) ensures protection against fluid contamination.

Designed for patient comfort and clinical efficacy; Low friction for easy patient transfers, Anti-microbial, Anti-static, Stain resistant, Abrasion resistant, Non-allergenic.

Available with or without tapered corners.

One, two, and three section pad options.

Fabric hinges and Velcro-style hinges available.

Fire rated CA 117.

Warranty: 1 Year Non-Prorated.

95004	HERO Ultra Comfort Stretcher Pad	2"
95005	HERO Ultra Comfort Stretcher Pad	3"
95006	HERO Ultra Comfort Stretcher Pad	4"
95007	HERO Ultra Comfort Stretcher Pad	5"
95000	HERO Basic Stretcher Pad	2"
95001	HERO Basic Stretcher Pad	3"
95002	HERO Basic Stretcher Pad	4"
95003	HERO Basic Stretcher Pad	5"

Available in all lengths and widths.